

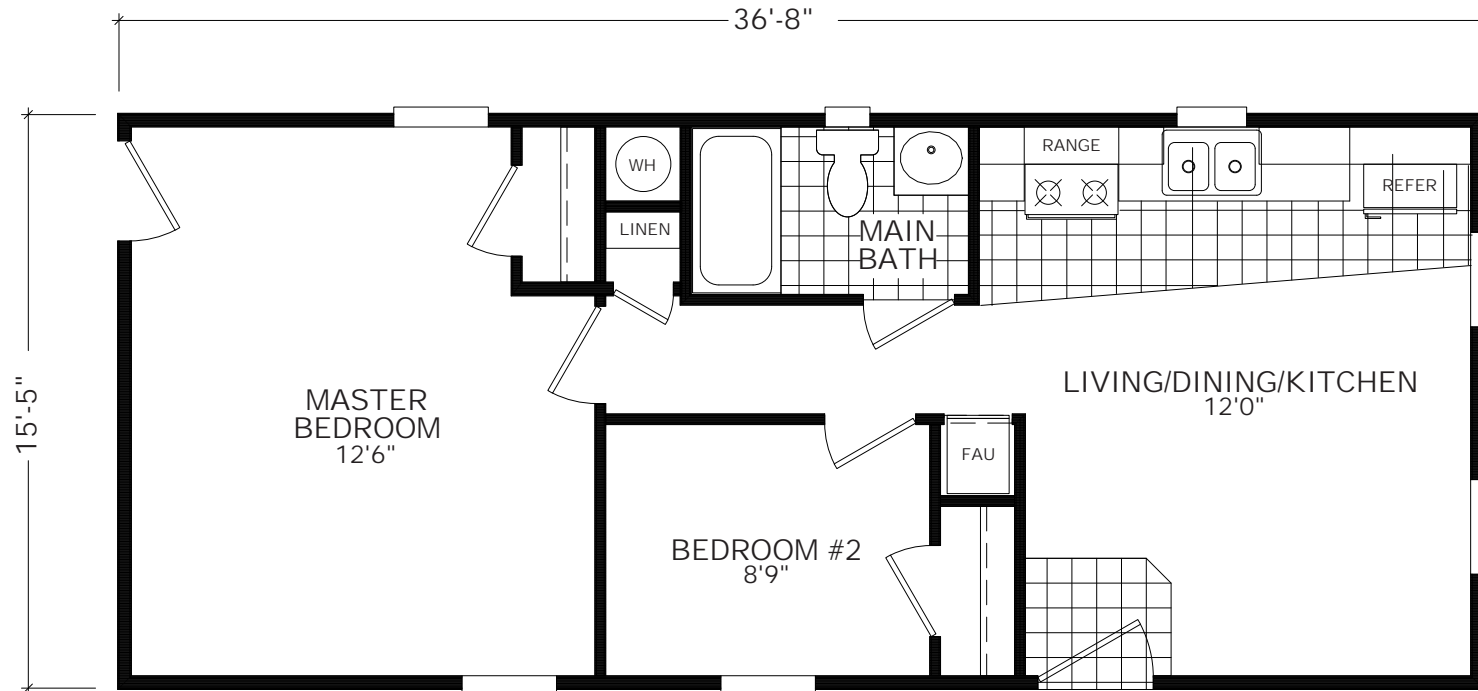


GS Single Section Series

Model: GS16362B

2 Bedrooms | 1 Bathrooms | 565 Square Feet

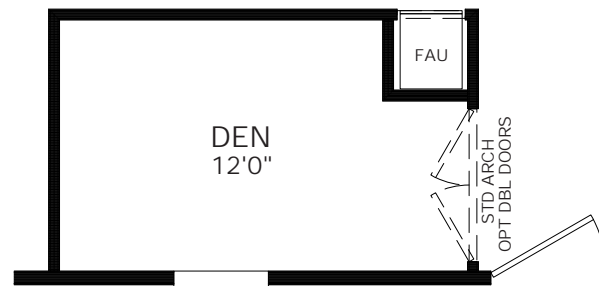
built by:



MODEL: GS16**362B**

APPROXIMATELY 565 SQ. FT.

2 BEDROOM, 1 BATH



ALT DEN

GS Standard Features



Construction Features

- Solid I-Beam Frame Construction With Corrosion Resistant Undercoating
- Drain System Below Steel Frame For Easy Access
- Vapor Barrier Between Frame System and Subfloor
- Sealed Floor Duct System and Water Lines, Installed Inside R-22 Rated Fiberglass Blankets Under Subfloor
- 5/8 Inch OSB Floor Decking
- 2" x 6" Subfloor Construction (2x8 on 32 Wides) With Joists Spaced 16" On Center
- Shut-Off Valves On All Water Fixtures
- 2" x 4" Exterior Wall Construction With Studs Spaced 16" On Center and R-11 Rated Fiberglass Insulation
- 90" Exterior Sidewall Height
- 100 Amp Electric Service With Copper Wiring and Interior Panel Box
- Forced Air Gas Furnace and Air Exchange System
- 40 Gallon Electric Water Heater
- Engineered Roof Trusses and Laminated Plywood Centerline Beam
- R-25 Rated Blown Roof Insulation
- OSB or Plywood Roof Decking With Class A Rated Shingles and Underlayment

Exterior Features

- Cement Vertical Siding With Hand-Painted Finish
- Attractive Shutter Treatments Per Plan
- Two-Color Exterior Design Available In Several Color Combinations
- Large White Vinyl Dual-Paned Windows With Locks
- Residential Insulated Front Door With Deadbolt
- Residential 9-Lite Rear Door With Deadbolt
- Exterior Lights At Front and Rear Doors
- Roof Eaves On All Sides (28 & 32 Wides)
- Exterior GFCI Electric Outlet

Interior Features

- Linoleum Hard-Surface Floor Covering, Including Entryway
- Durable Cut Pile Carpet, Available In Several Colors
- Vaulted Ceilings Throughout Entire Home With Knockdown Textured Finish
- Tape and Textured Interior Walls Throughout Home
- 2 Panel "Camden" Interior Passage Doors, Mortised With 150lb Hinges & Lever Handles
- 5/8" Thick Interior Door Jambs With Profiled Door Casing
- Drapery Valances With Aluminum Mini Blinds
- Ventilated Shelving In Wardrobes and Pantries
- Decorator Style Electrical Receptacles and Silent Rocker Switches
- Dining Room Chandelier, Bedroom Ceiling Lights and Bath Vanity Lights
- Ceiling Fan Ready In Living Room and Master Bedroom

Kitchen, Bath & Bonus Room Features

- Modular Cabinet Construction With 3/4" Thick, Bored and Screwed Face Frames
- 31" Tall Kitchen Overhead Cabinets With Finished Interiors, Adjustable Shelves and Large Crown Cabinet Moulding
- Hardwood Cabinet Doors With Concealed, Adjustable Hinges (2 colors)
- High-Pressure Laminate Countertops, Available In Several Colors
- 7" Deep Stainless Steel Kitchen Sink
- 16 Cubic Foot Double-Door, Frost-Free Refrigerator
- 30" Free-Standing Gas Range
- Utility Shelf Over Washer and Dryer Area In Bonus Room
- Exhaust Fans In Baths
- Marble Bath Sinks
- 1 Piece Fiberglass Tub/Shower Combinations In Baths
- Water Saver Commodes

Popular Options

- 2 x 6 Exterior Walls With R-19 Insulation
- Roof Insulation Upgraded to R-30, R-35 or R-40 (N/A On Singlewides)
- Roof Dormer and Upgraded Siding
- Oil Rubbed Bronze Package Décor Package
- Upgrade Ceiling Cove, Baseboard and Door Molding Package
- Gas or Wood burning Fireplaces
- Premium Carpet In Several Styles and Colors
- Upgrade Raised Panel Hardwood Cabinet Doors and Face Frames
- Upgrade Solid Surface Counter Tops & Splashes
- Premium Refrigerators and Ranges
- Dishwasher and "Space-Saver" Microwave
- Flash Bath in Master Bath
- Ceiling Fans and Upgrade Lighting
- Skylights In Kitchen and Baths

Your Cavco West Retailer:

IMPORTANT: Because we continuously update and modify Cavco products it is important for you to know that our brochures and literature are for illustrative purposes only. All information contained herein may vary from the actual home we build. Dimensions are nominal and length and width measurements are from exterior wall to exterior wall. The right is reserved to make changes at any time, without notice or obligation, in prices, colors, materials, specifications, features and models. Please check with your retailer for specific information about the home you select. (Add approximately four feet to determine transportable length.)
©2010 Cavco Industries, Inc. | All Rights Reserved | www.cavco.com

Cavco West offers hundreds of Manufactured Homes, Park Models, Cabins and Commercial Building floor plans. Talk with your Cavco West retailer for more information.

