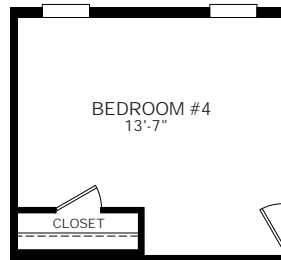
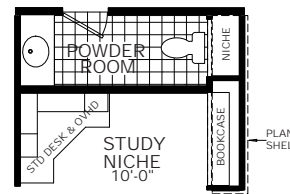


MODEL: ES40743G

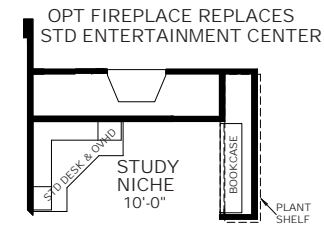
APPROXIMATELY 2954 SQ. FT.
3 BEDROOM, 2 1/2 BATH



OPT BEDROOM #4
REPLACES DEN



OPT POWDER ROOM



OPT FIREPLACE REPLACES
STD ENTERTAINMENT CENTER

EST Standard Features



Construction Features

- Solid I-Beam Frame Construction With Corrosion Resistant Undercoating
- Drain System Below Steel Frame For Easy Access
- Vapor Barrier Between Frame System and Subfloor
- Sealed Floor Duct System and Water Lines, Installed Inside R-22 Rated Fiberglass
- Blanket Insulation Under Subfloor
- 5/8 Inch OSB Floor Decking
- 2" x 6" Subfloor Construction (2x8 on 32 Wides) With Joists Spaced 16" On Center
- Shut-Off Valves On All Water Fixtures
- 2" x 6" Exterior Wall Construction With Studs Spaced 16" On Center and R-19 Rated Sidewall Insulation
- 4/12 Roof Pitch (Nominal)-NA on Grand Estate
- Concealed Ridge Beam
- 30 PSF Roof Load
- 93" Exterior Sidewall Height
- 100 Amp Electric Service With Copper Wiring and Interior Panel Box- (200 Amp service on Grand Estate)
- Forced Air Gas Furnace and Air Exchange System
- 50 Gallon Electric Water Heater
- Engineered Roof Trusses and Laminated Plywood Centerline Beam
- R-40 Rated Blown Roof Insulation
- OSB or Plywood Roof Decking
- Architectural Residential Rated Shingles

Exterior Features

- Cement Vertical Siding With 8" Lap Siding On Front Door Side and Hitch End
- Attractive Window Treatments on Front Door Side and Hitch End
- Tower Dormer with Coffered Ceiling
- Two-Color Exterior Design Available In Several Color Combinations
- Low-E White Vinyl Framed Dual-Paneled Windows With Locks
- Squared Recessed Entry w/Block Sidelight Window (Most Homes – See Brochure)
- Insulated Front Door With Colonial Window & Deadbolt
- Nine-Lite Rear Door With Deadbolt
- Exterior Lights At Front and Rear Doors
- Roof Eaves On All Sides
- Exterior GFCI Electric Outlet

Interior Features

- Linoleum Hard-Surface Floor Covering, Including Entryway
- FHA Approved Carpet and Pad Available In Many Colors
- Vaulted Ceilings Throughout Entire Home With Knockdown Textured Finish
- Taped and Textured Interior Walls Throughout Home

- Semi-Gloss White Interior Paint
- 2 Panel "Camden" Interior Passage Doors, Mortised With 150 Lb. Hinges and Lever Handles
- 5/8" Thick Interior Door Jambs With Upgraded Door Casing
- Large Baseboard Throughout Home
- Tape & Texture Entertainment Centers and/or Niches (Most Homes – See Brochure)
- Rounded Window Corners
- Drapery Valances With Aluminum Mini Blinds
- Wood Shelving In Wardrobes and Closets
- Decorator Style Electrical Receptacles and Silent Switches
- Dining Room Chandelier, Bedroom Ceiling Lights and Bath Vanity Lights
- Ceiling Fan Ready In Living Room, Master Bedroom and Family Room (Where Applicable)

Kitchen, Bath & Bonus Room Features

- Modular Cabinet Construction With 3/4" Thick, Bored and Screwed Face Frames
- Hardwood Cabinet Doors And Face Frames
- Pebble Grade Solid Surface Countertops in Kitchen (Grand Estate Only)
- 39" Tall Overhead Cabinets With Finished Interiors and Adjustable Shelves In Kitchen
- Upgrade Cabinet Crown Molding on Kitchen Overhead Cabinets
- Can Lighting in Kitchen
- High-Pressure Laminate Countertops, Available In Several Colors
- 6" Ceramic Tile Backsplashes On Kitchen Countertops and Bath Vanities
- Crescent Edging On Kitchen Countertops and Bath Vanities
- 6" Marble Window Sill in Kitchen
- Stainless Steel or 8" Deep White Composite Kitchen Sink
- Satin Nickel Single Lever Pull Out Faucet in Kitchen
- 16 Cubic Foot Double-Door, Frost-Free Refrigerator
- 30" Free-Standing Gas Range
- White or Black Gourmet Kitchen Package on Grand Estate
- Utility Overhead Shelf Over Washer and Dryer Area In Bonus Room
- Exhaust Fans In Baths
- Tape & Texture Platform Corner Tub and Separate Fiberglass Shower w/ Glass Door In Master Bath (As Shown On Brochure)
- Single Lever Faucets on Bath Lavies, Tubs and Showers (N/A on Corner Tub)
- Marble Bath Sinks
- 36" High Master Bath Lavy
- One-Piece Fiberglass Tub/Shower In Main Bath(s)
- Elongated Water Saver Commodes
- Medicine Cabinets, Towel Bars and Tissue Holders In Baths

Popular Options

- Solid Surface Countertops
- Tile Showers
- Upgrade Ceiling Molding
- Fireplaces
- Premium Carpet In Several Styles and Colors
- Premium Refrigerators and Ranges
- Dishwasher and "Space-Saver" Microwave
- Ceiling Fans and Upgrade Lighting Packages
- Skylights In Kitchen and Baths

Your Cavco West Retailer:

IMPORTANT: Because we continuously update and modify Cavco products it is important for you to know that our brochures and literature are for illustrative purposes only. All information contained herein may vary from the actual home we build. Dimensions are nominal and length and width measurements are from exterior wall to exterior wall. The right is reserved to make changes at any time, without notice or obligation, in prices, colors, materials, specifications, features and models. Please check with your retailer for specific information about the home you select. (Add approximately four feet to determine transportable length.) ©2010 Cavco Industries, Inc. | All Rights Reserved | www.cavco.com

Cavco West offers hundreds of Manufactured Homes, Park Models, Cabins and Commercial Building floor plans. Talk with your Cavco West retailer for more information.

